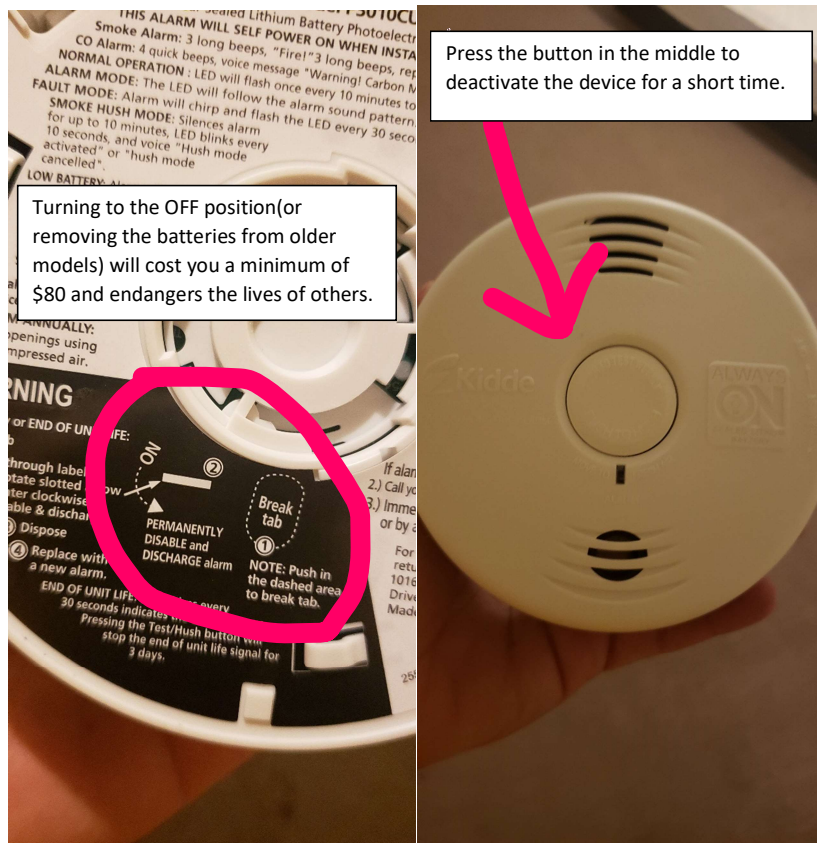


Smoke Detectors

DO NOT REMOVE TAKE YOUR SMOKE DETECTORS OFF THE WALL - Some of our smoke detectors have batteries, however many have a permanent battery that CANNOT BE REMOVED. If your smoke detector sounds, please check for any hazardous condition and if none exists, simply press the button in the middle, this will start a timer that will sound again in a preset time frame (possibly 10 or 15 minutes) if the smoke or condition causing the alarm still exists.

Permanent battery smoke detectors have a "KILL SWITCH", when you turn them off they CANNOT BE TURNED BACK ON. When we find one of these turned to the off position, your account is automatically charged a minimum of \$80 as these devices are very expensive.



Commented [TP1]:

Commented [TP2R1]:

Commented [TP3R1]:

Commented [TP4R1]:

Commented [TP5R1]: